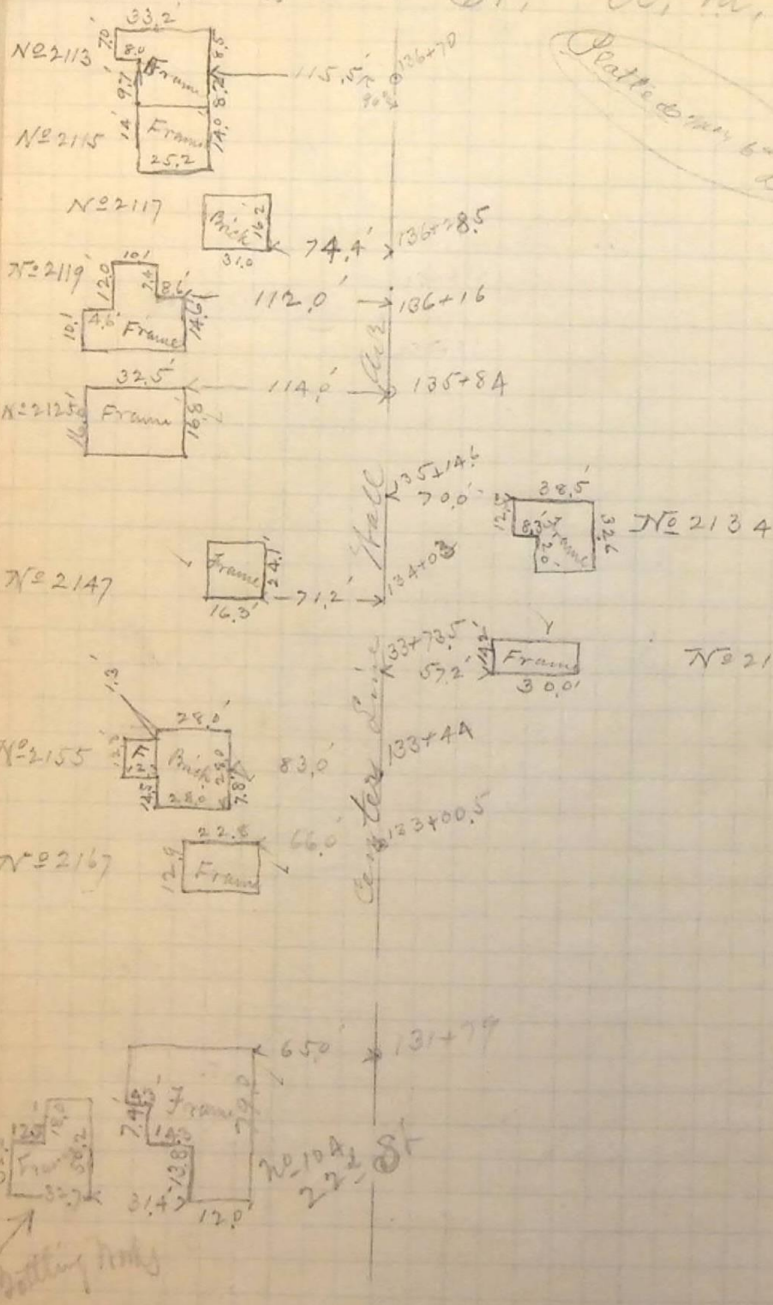


Measurements to Hitches on Both Sides Hall  
 21<sup>st</sup> to 22<sup>nd</sup> St. A. M. Nov 12-90



84  
 Measurements to Buildings on  
 E. Side of Hall Ave, 25<sup>th</sup> to 24<sup>th</sup> St.  
 P. M. Nov 12-90

